

Appendix 3: Population and Age Dependency Graphs

Chart 1A: Population Growth/Decline by Age Group 2018-2033 – Growth Option (5A+)

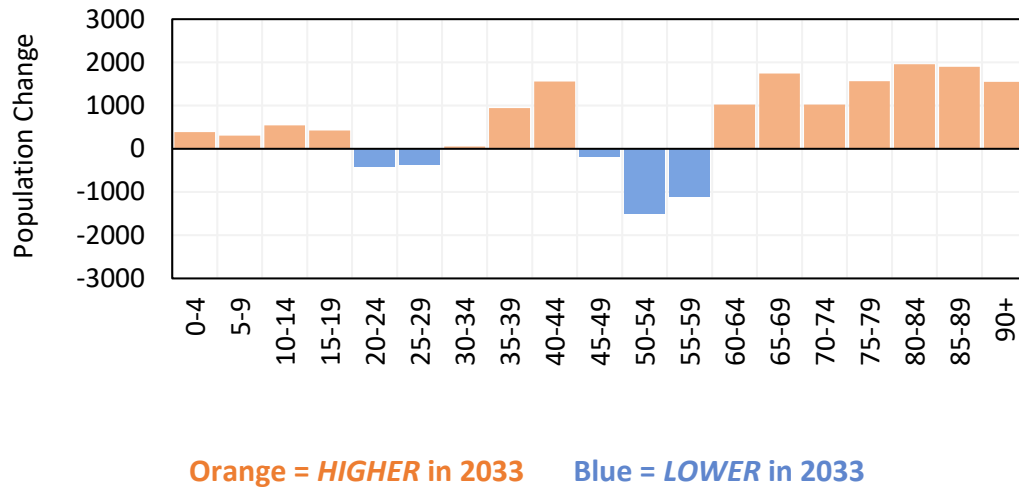
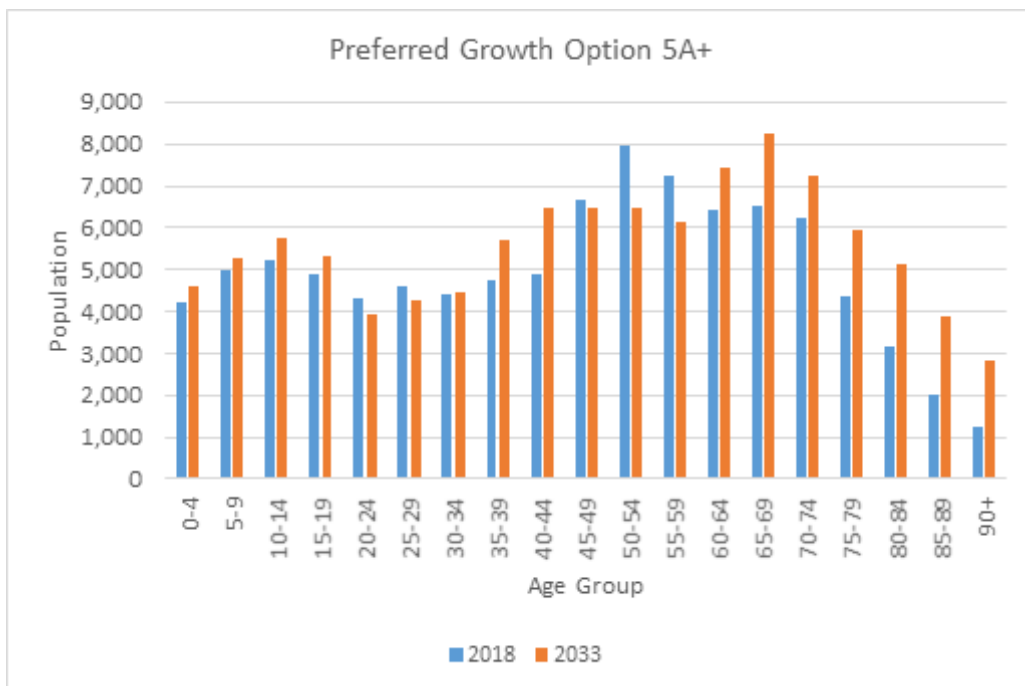
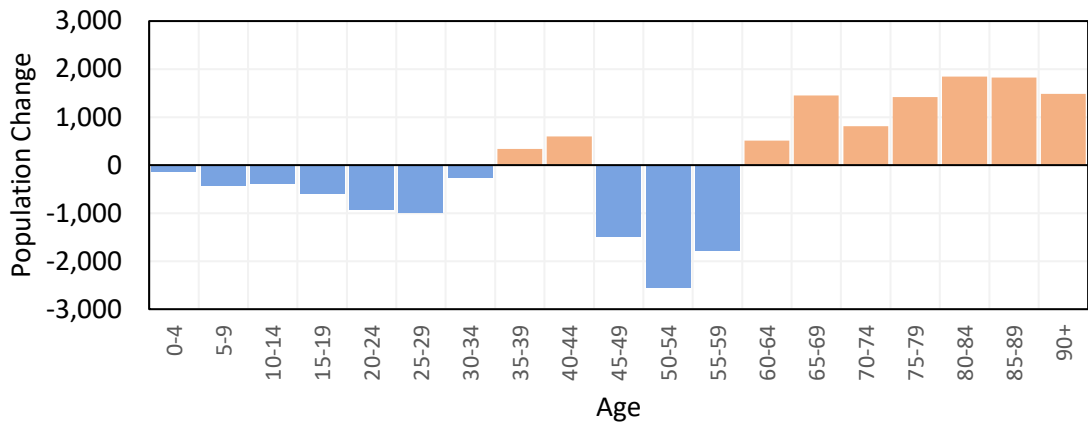


Chart 1B: Total Population by Age Group 2018 compared to 2033 – Growth Option (5A+)



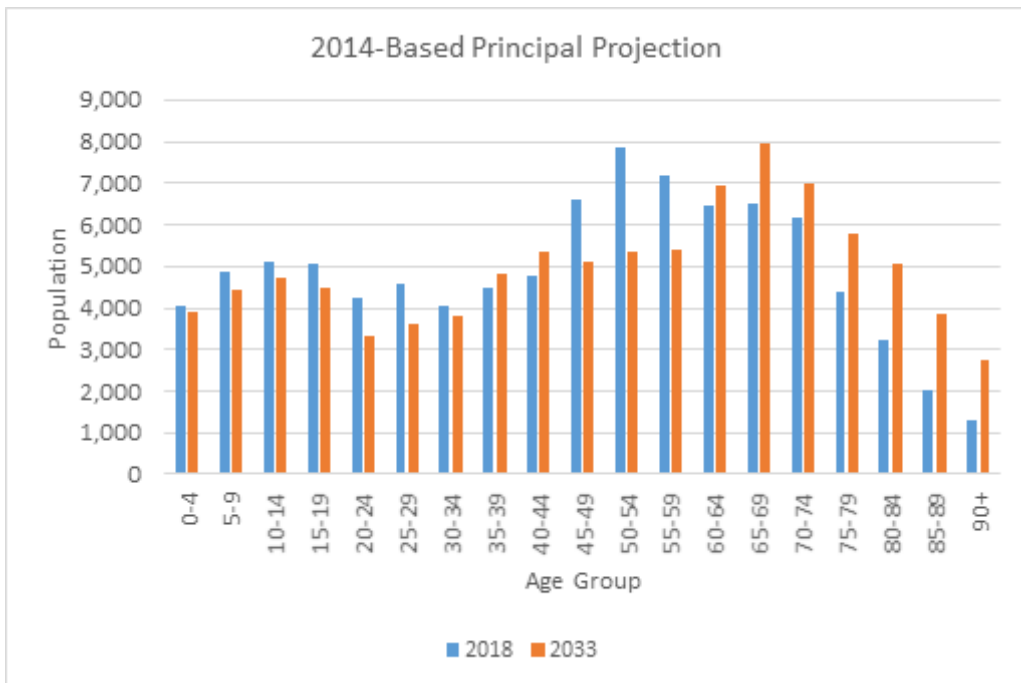
Growth Option 5A+ gives us 2529 more 30-60 year olds and 7987 more over 70s.

Chart 2A: Population Growth/Decline by Age Group 2018-2033 - WG 2014-Based Principal Projection



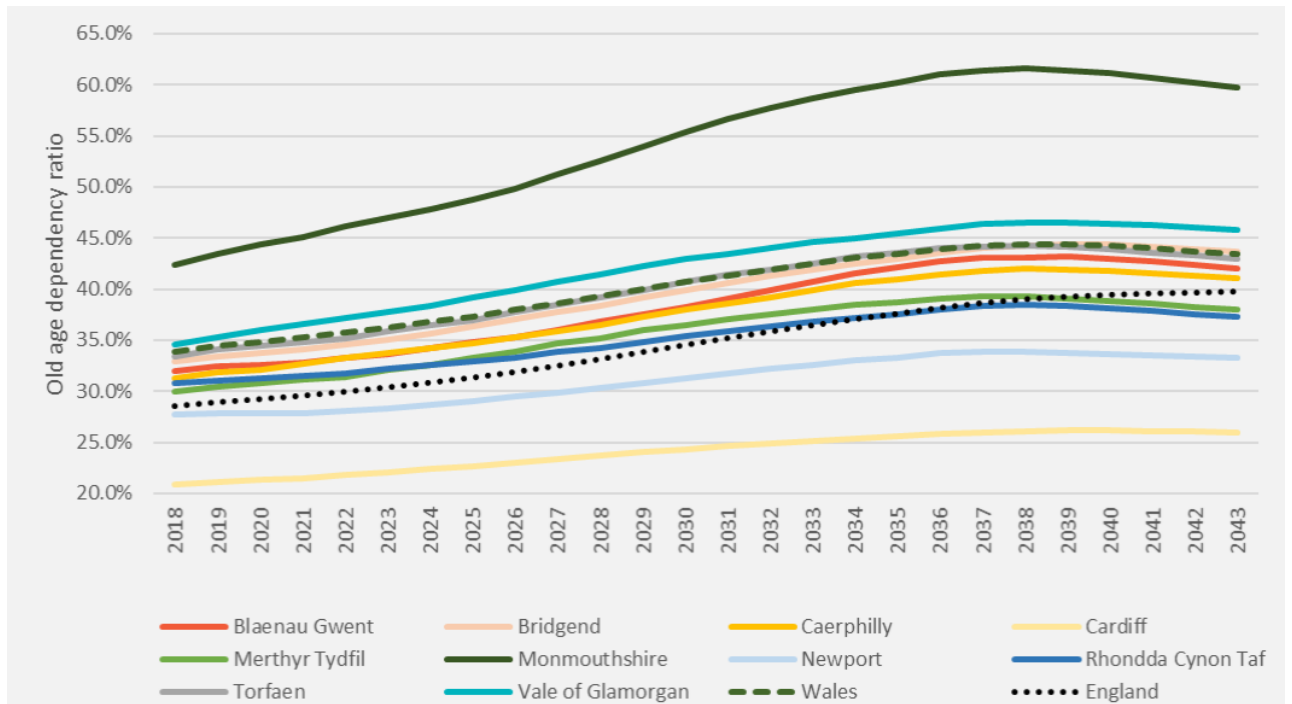
Orange = *HIGHER* in 2033 Blue = *LOWER* in 2033

Chart 2B: Total Population by Age Group 2018 compared to 2033 - WG 2014-Based Principal Projection



Following the 2014 projections would give us 3209 fewer 30-69 year olds and 7372 more over 70s.

Old Age Dependency 2018-2043 South East Wales, Wales and England



Source: Lichfields, June 2020